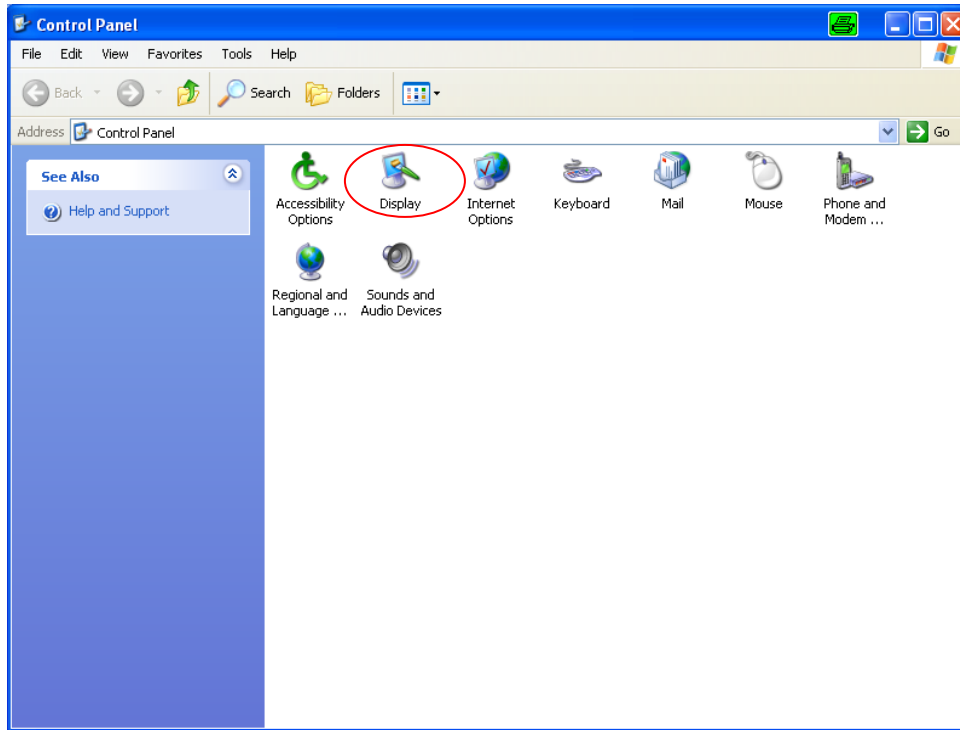


# How to Adjust Your Screen Resolution

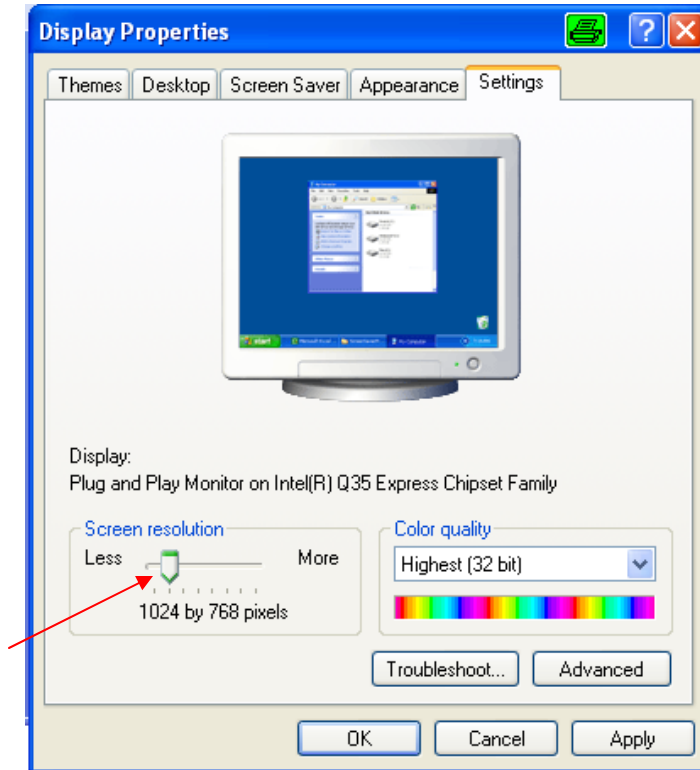
- Go to **Start** and click on **Control Panel**.



- Then select **Display**.



- Once you are in the **Display** window, select the **Settings** tab on the top right-hand side of the page. Then use your mouse to drag the slider (see the red arrow) to get the screen resolution you want. The screen resolution becomes higher when you move the slider to the right. To best view this website, you need to have the screen resolution set at 1024 x 768 pixels or higher.
- Click on **Apply** to activate your new resolution setting.



- A window will appear asking if you want to keep the new resolution. Click on **Yes** to keep the new resolution. Click on **No** if you want to go back to the previous resolution. If you do not click on **Yes** or **No** in 10 seconds, the new resolution will automatically be used.
- Your screen will then be changed to the new resolution setting. This may take a few seconds.
- Once you have finished, click on **OK** to exit the screen resolution setup.

